

Grasso FX PP 2x450 Duo H1 screw

Specifications

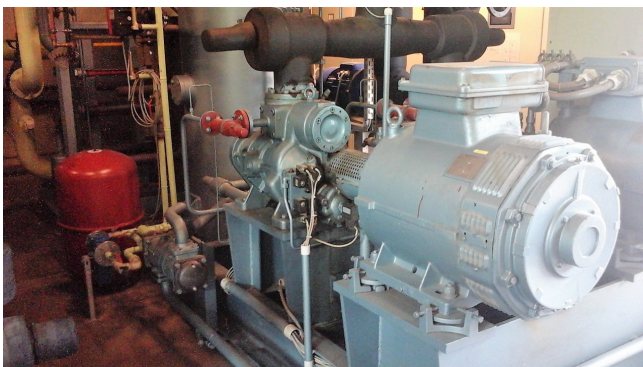
Merk	Grasso
Type	FX PP 2x450 Duo H1 screw
Product type	Water Cooled Chiller
Capaciteit kW	844*
Koudemiddel	NH 3 (ammonia)
Koudemiddel Type	R 717
Liquid buffer tank	✓
Pump	✓
Gewicht in kg.	9700
Afmetingen	5400x2200x2300 mm (LxWxH)
Opmerkingen	Y.O.B. 2003 // Run time: 43670h & 45398h
Meer informatie?	*Capacity based on 2x compressors / 844kW at 0°C/+40°C // 706kW at -5°C/+40°C // 582kW at -10°C/+40°C
Stock	1



Description

Used Grasso FX PP 2x450 Duo H1 screw

Gebruikte GEA / Grasso FX PP 2x450 Duo met schakelkast compressor (s / n: 559) // 2x Grasso H-1 Compressoren / Dit apparaat gebruikt NH3 als koelmiddel / geom Volume: 2670/4500 RPM // 2x Schorch KN7250S-AB01B-z Elektromotoren / 50 Hz / 90kW / 400V-690V / 154A-89A / 2960 RPM / 380-420V // Birkenbeul 5AP90L-4 pomp / 6.6A-3.8A bij 1410-1692 RPM // Alfa Laval MK15-BWFGR Warmtewisselaar 61 L // Alfa Laval MK15-BWFGR 64,8 L // EM Polar ks - DM610





Grasso GmbH CE
Refrigeration Technology

Geschäftsbereich
Kältetechnik

Holzhauser Str. 165 D-13509 Berlin
 Telefon: +049 (0)30/43 592-6 Fax: +049 (0)30/43 592-777
 E-Mail: info@grasso.de

Typ/Type/Type	FX PP 2x450 Duo	Serien-Nr./Serial- No./N° de série	559	
Herstellerjahr/Built in/ Ann. constr.	2003	Leergewicht/Weight empty/Poids à vide	7800	kg
Kältemittel/Refrigerant/ Frigorigène	NH ₃	Kältemittel-Füllmenge/ Filling with Refrigerant/ Rempl. avec fluide frigor.	90	kg
zulässiger Druck/ Max working pressure/ Surpression service adm.	[Hochdruckseite/High pressure side/Côté refoulement	23	bar
		Niederdruckseite/Low pressure side/Côté aspiration	16	bar

